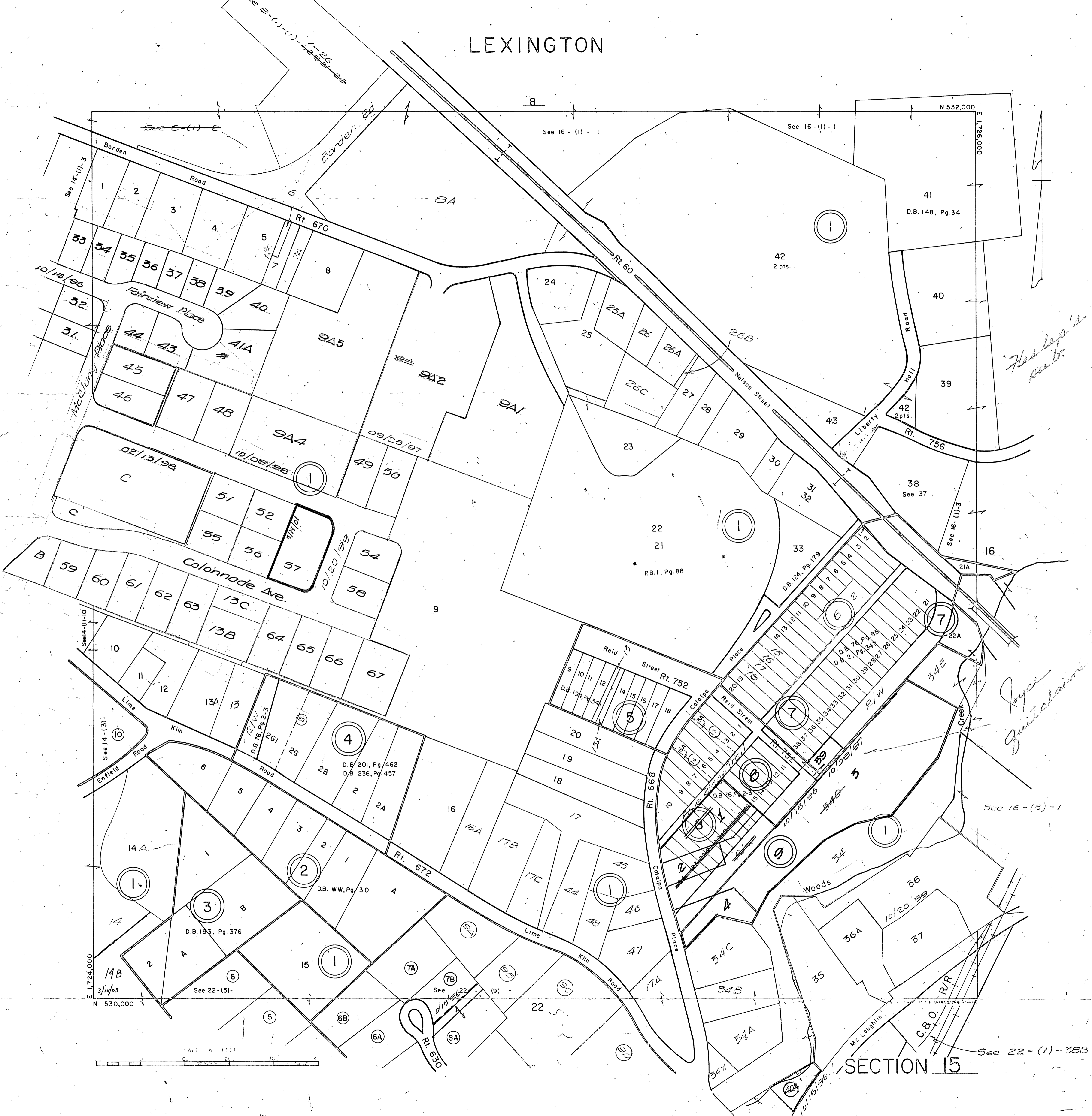


LEXINGTON



See 14-11-3

See 16-1-1

See 16-1-1

N 532,000

E 1726,000

41
D.B. 148, Pg. 34

42
2 pts.

38
See 37

22
21
P.B. 1, Pg. 88

DB. 124, Pg. 179

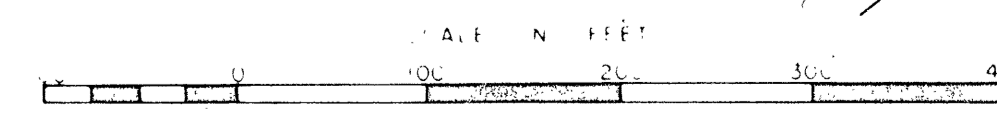
D.B. 201, Pg. 462
D.B. 236, Pg. 457

D.B. 193, Pg. 376

D.B. WW, Pg. 30

See 16-5-1

E. 1724,000
N 530,000
3/14/03



SECTION 15

See 22-1-38B

Heslop's sub.

Joyce quitclaim