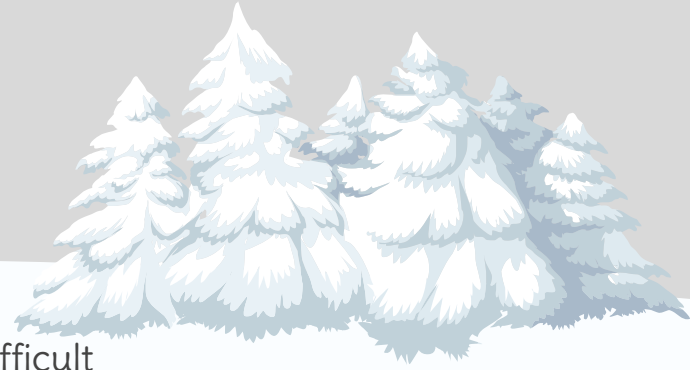


# How Are Weather-Related School Decisions Made?

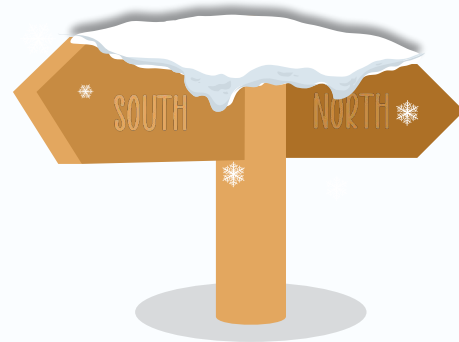
Lexington City Schools



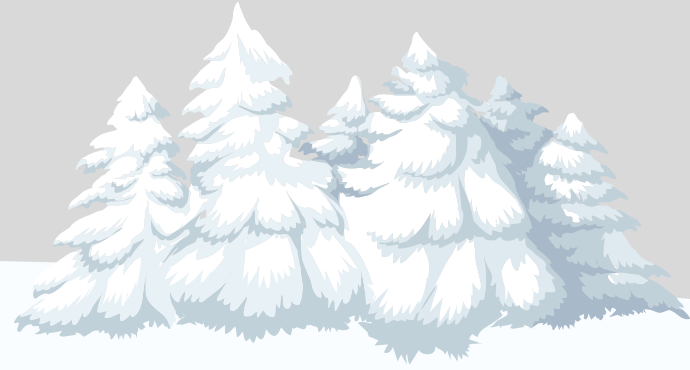
# What information factors into a decision to delay or close schools during bad weather?



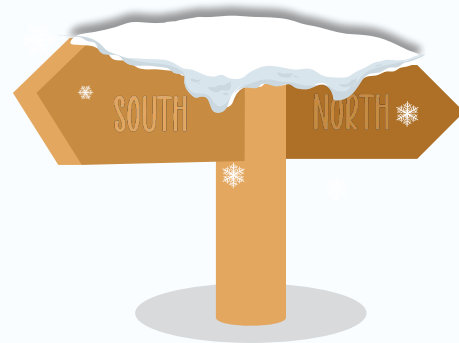
- Making a decision to delay or close schools is one of the most difficult challenges for school districts, because like weather forecasting, the process is not a perfect science.
- Information about the weather and conditions is gathered from many sources including the National Weather Service, Accu-Weather, and local news outlets. The superintendent will check the condition of roads, school driveways, parking areas, and sidewalks near the schools.
- Sometimes the decision is made based on a forecast, considering snow or ice accumulation predictions that may impact safe travel to or from school.



# What information factors into a decision to delay or close schools during bad weather?

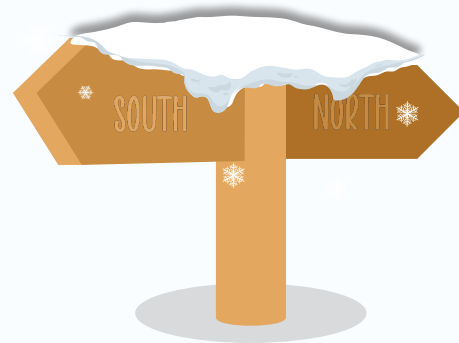
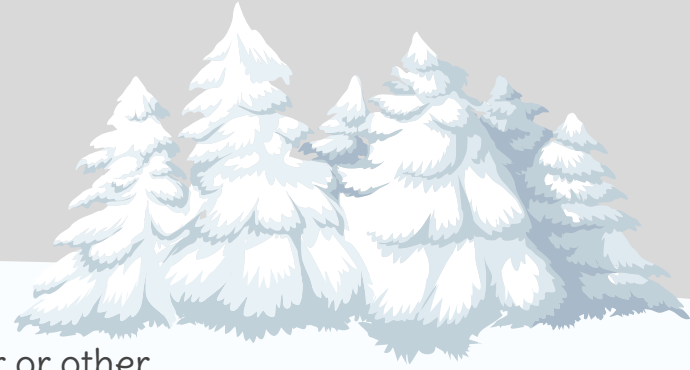


- Keep in mind that the slightest change to the forecast can have a drastic impact on the type and amount of precipitation we may see in our area.
- We use the best information we have when the decision has to be made to make sure staff and families have time to plan.
- The safety of our students and staff is always at the heart of any weather-related decision.



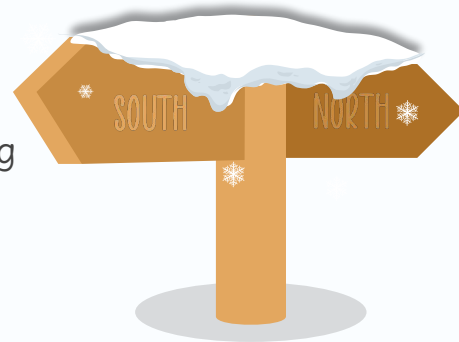
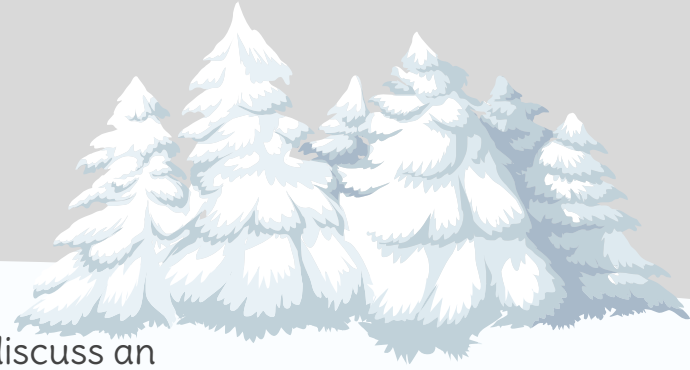
# What information factors into a decision to delay or close schools during bad weather?

- Weather conditions or continuing impact from severe weather or other events, such as power outages, may cause a delayed opening, early closing or closing for the day.
- Weather conditions throughout the county are also gathered and factored into forecasting travel conditions particularly for LCS students and staff who travel into the city for school.



# Who is involved in making the decision to delay or close schools during bad weather?

- The superintendent and Director of Operations collaborate to discuss an assessment of the weather and its impact on school operations and programs.
- The superintendent often consults with the National Weather Service and public works and also communicates with the school board in making a recommendation/decision about the status (open, delayed, closed) of schools.
- The superintendent and the Director of Operations send out alert messaging to staff and families and post updates and announcements on local media outlets, the website, and Facebook.



# How do I find out if schools are closed or delayed?

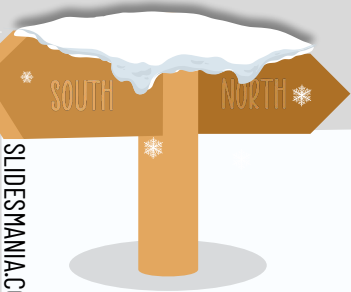
Check for phone, text or email alerts from Lexington City Schools

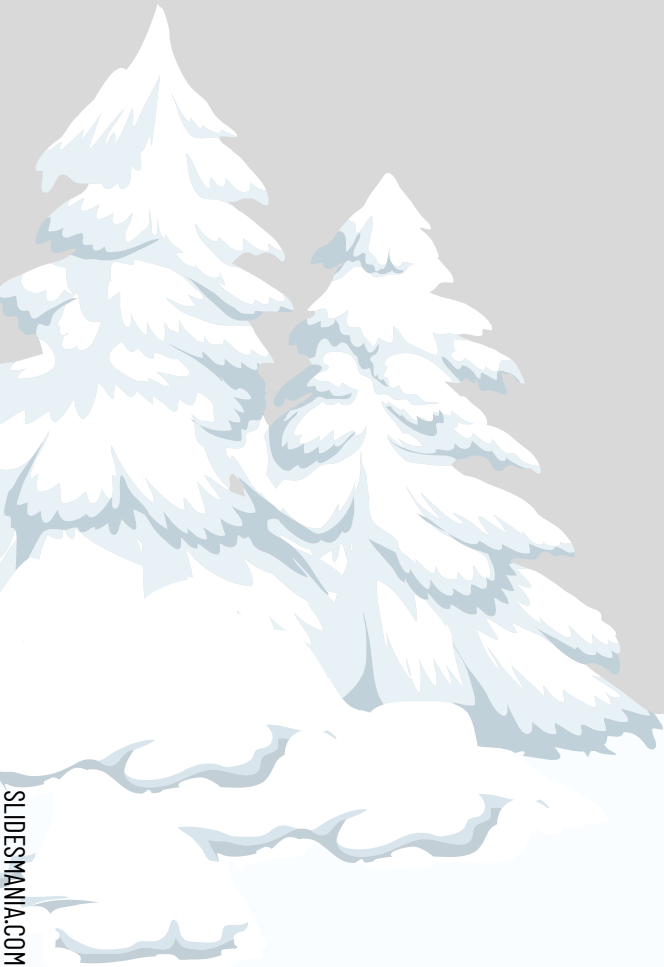
\*Make sure contact information for your student is current by contacting your school's main office.

Check local news channels for updates

\*WDBJ 7, WSLS 10, WSET 13, WFXR Fox TV, Wheeler Broadcasting, 3WZ Radio, STAR Radio, WRA Radio

Check the LCS website and Facebook page





# Stay Safe Out There!

Thank you for your support of our  
Lexington City Schools!