



WELCOME!!

TO THE JORDAN'S POINT PARK MASTER PLAN PUBLIC FORUM #2

This meeting is intended to gather your feedback on two concept plans (Concept A and Concept B). First, we will ask you to vote on the items you like the most about each plan using the provided sticky dots. (Blue dots for Concept A, Red dots for Concept B). Then, we welcome you to provide your feedback on the photoboards and photomodels on the comment board or using the provided sticky notes.

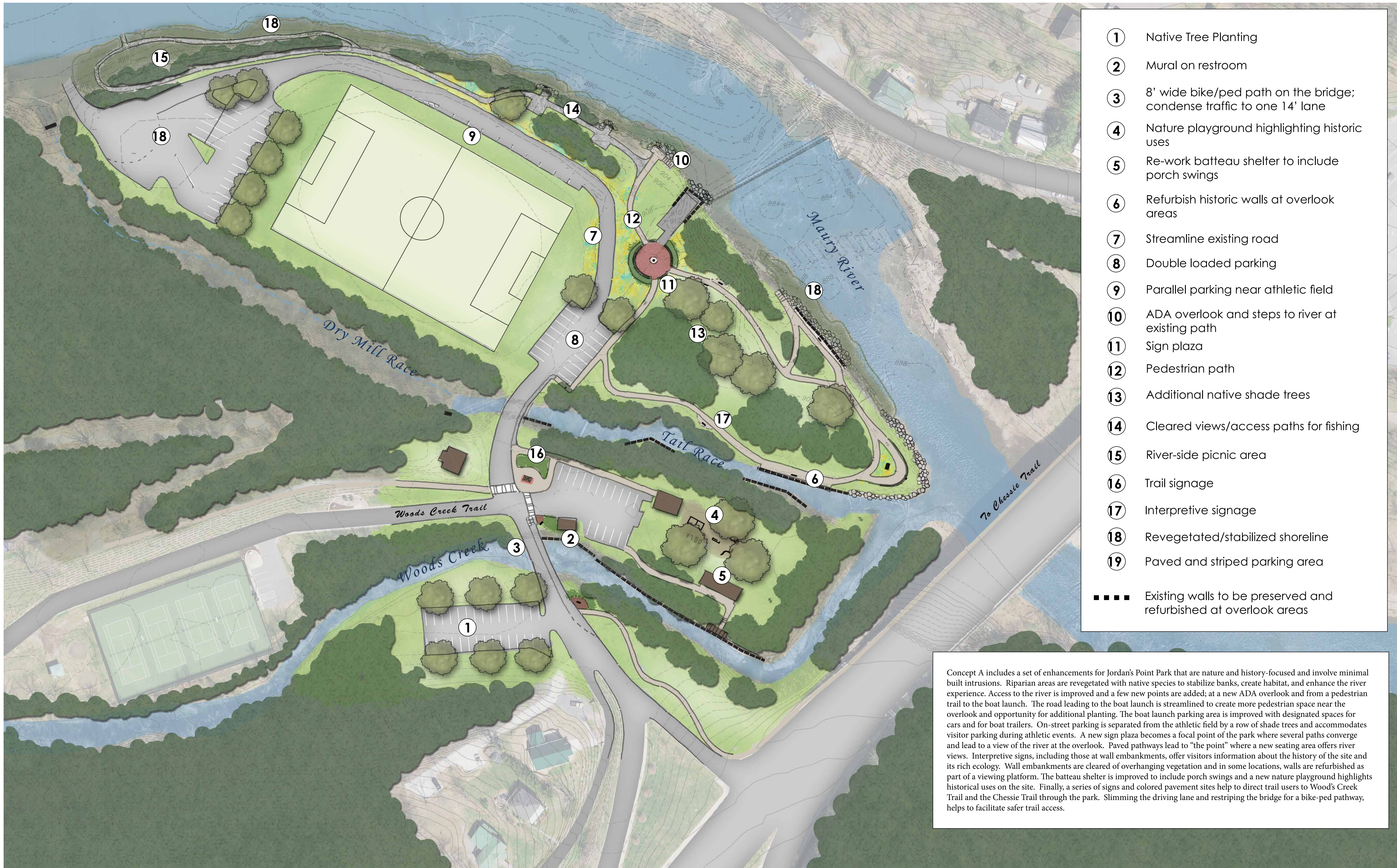
AGENDA

- 5:30 - 6:00 pm - open public forum
- 6:00 pm - brief presentation about public input process, concept development and question and answer period

ON YOUR OWN

- Take a moment to look at the maps showing potential concepts A and B.
- Review the photoboards and photomodels for examples of the concepts shown on the maps.
- Place 1 blue dot on each facility or feature you like most in Concept A (you may select up to 6 different facilities or features, but, only one dot per item please).
- Place 1 red dot on each facility or feature you like most in Concept B.
- Offer comments about the photos or photomodels on the comment board. Please remember to refer to the letter(s) of the pictures so that we can best understand your comments.

THANK YOU all for participating!

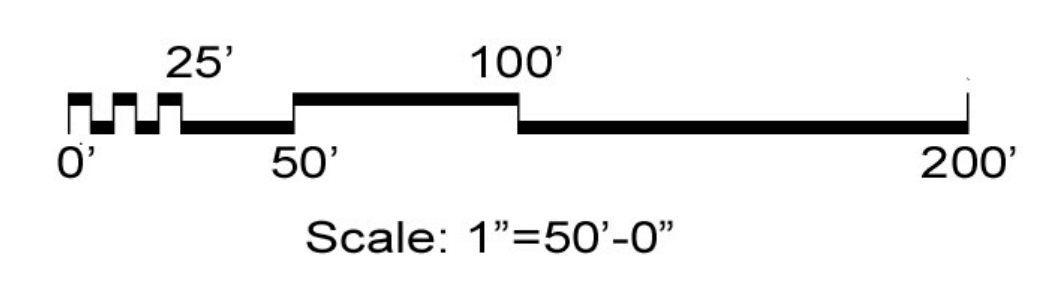


- ① Native Tree Planting
 - ② Mural on restroom
 - ③ 8' wide bike/ped path on the bridge; condense traffic to one 14' lane
 - ④ Nature playground highlighting historic uses
 - ⑤ Re-work bateau shelter to include porch swings
 - ⑥ Refurbish historic walls at overlook areas
 - ⑦ Streamline existing road
 - ⑧ Double loaded parking
 - ⑨ Parallel parking near athletic field
 - ⑩ ADA overlook and steps to river at existing path
 - ⑪ Sign plaza
 - ⑫ Pedestrian path
 - ⑬ Additional native shade trees
 - ⑭ Cleared views/access paths for fishing
 - ⑮ River-side picnic area
 - ⑯ Trail signage
 - ⑰ Interpretive signage
 - ⑱ Revegetated/stabilized shoreline
 - ⑲ Paved and striped parking area
- ■ ■ ■ Existing walls to be preserved and refurbished at overlook areas

Concept A includes a set of enhancements for Jordan's Point Park that are nature and history-focused and involve minimal built intrusions. Riparian areas are revegetated with native species to stabilize banks, create habitat, and enhance the river experience. Access to the river is improved and a few new points are added; at a new ADA overlook and from a pedestrian trail to the boat launch. The road leading to the boat launch is streamlined to create more pedestrian space near the overlook and opportunity for additional planting. The boat launch parking area is improved with designated spaces for cars and for boat trailers. On-street parking is separated from the athletic field by a row of shade trees and accommodates visitor parking during athletic events. A new sign plaza becomes a focal point of the park where several paths converge and lead to a view of the river at the overlook. Paved pathways lead to "the point" where a new seating area offers river views. Interpretive signs, including those at wall embankments, offer visitors information about the history of the site and its rich ecology. Wall embankments are cleared of overhanging vegetation and in some locations, walls are refurbished as part of a viewing platform. The bateau shelter is improved to include porch swings and a new nature playground highlights historical uses on the site. Finally, a series of signs and colored pavement sites help to direct trail users to Wood's Creek Trail and the Chessie Trail through the park. Slimming the driving lane and restriping the bridge for a bike-ped pathway, helps to facilitate safer trail access.



Jordan's Point Park Master Plan | Concept Plan A



PLEASE PLACE **ONE BLUE DOT** ON EACH FACILITY OR FEATURE (**REFER TO CONCEPT PLAN A**) YOU WOULD MOST LIKE TO SEE IMPLEMENTED AT JORDAN'S POINT PARK

① Native Tree Planting
② Mural on restroom
③ 8' wide bike/ped path on the bridge; condense traffic to one 14' lane
④ Nature playground highlighting historic uses
⑤ Re-work batteau shelter to include porch swings
⑥ Refurbish historic walls at overlook areas
⑦ Streamline existing road
⑧ Double loaded parking
⑨ Parallel parking near athletic field

⑩ ADA overlook and steps to river at existing path
⑪ Sign plaza
⑫ Pedestrian path
⑬ Additional native shade trees
⑭ Cleared views/access paths for fishing
⑮ River-side picnic area
⑯ Trail signage
⑰ Interpretive signage
⑱ Revegetated/Stabilized Shoreline
⑲ Paved and stripe parking



Jordan's Point Park Master Plan

Concept Plan A - Dot Voting



A. River side Picnic Area under the tree canopy.



B. Separated pedestrian river access.



C. Stabilized and re-vegetated River edge.



D. Improved Canoe/kayak launch and take-out.



E. Sign Plaza - highlights the convergence of several walkways and entrance to the overlook. Historic signs may be integrated into the space with seat walls for pausing.



F. Viewing plaza at the point adds a space to view the Maury River and highlight history.



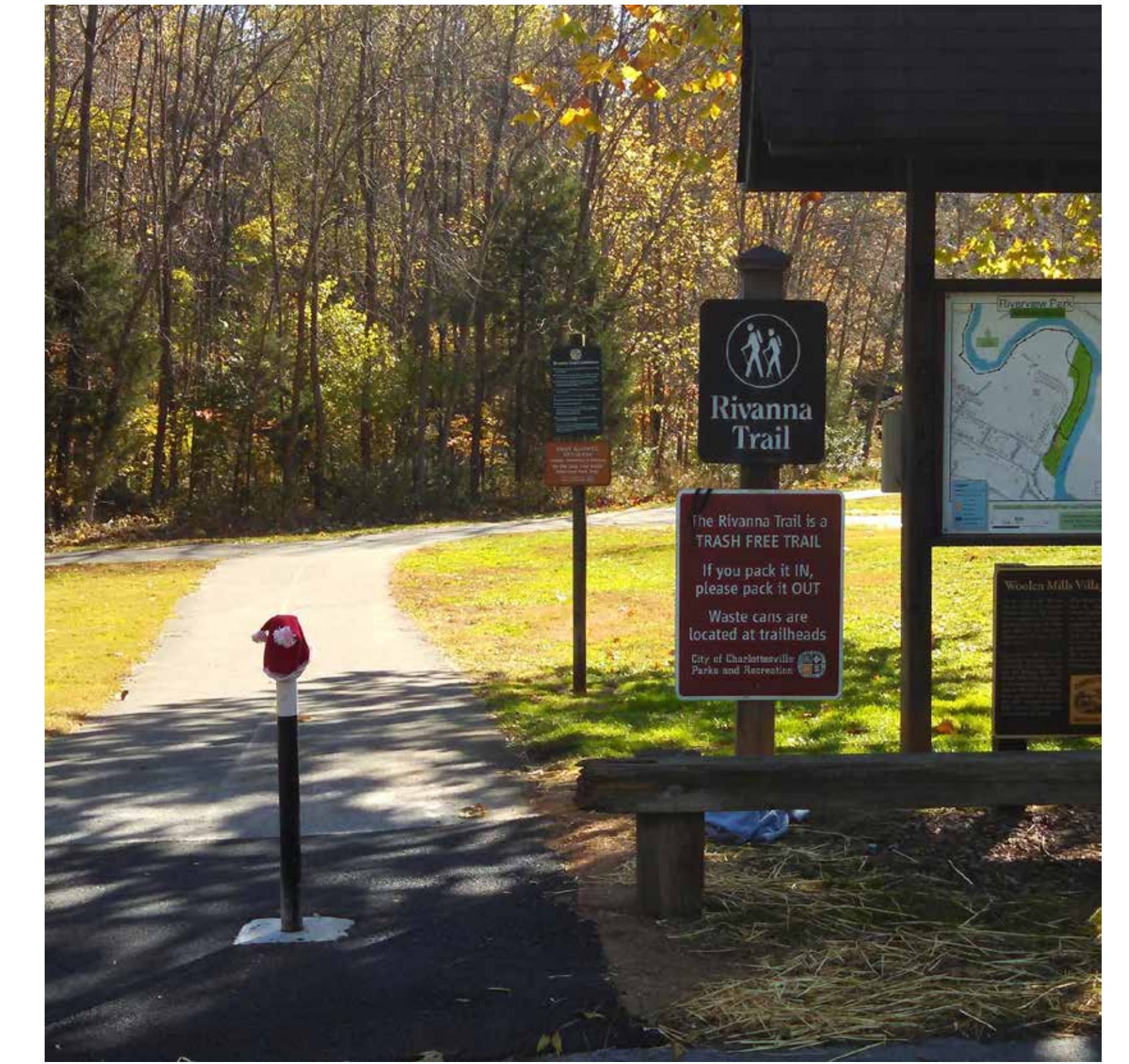
G. Interpretive history playground - example of how history can be interpreted through play.



H. Seat wall at sign plaza.



I. ADA overlook offers universal access to the river and a safe space for views.



J. Signs and map at trailhead.



K. Stone overlook areas for fishing access.



L. Interpretive signage at overlook

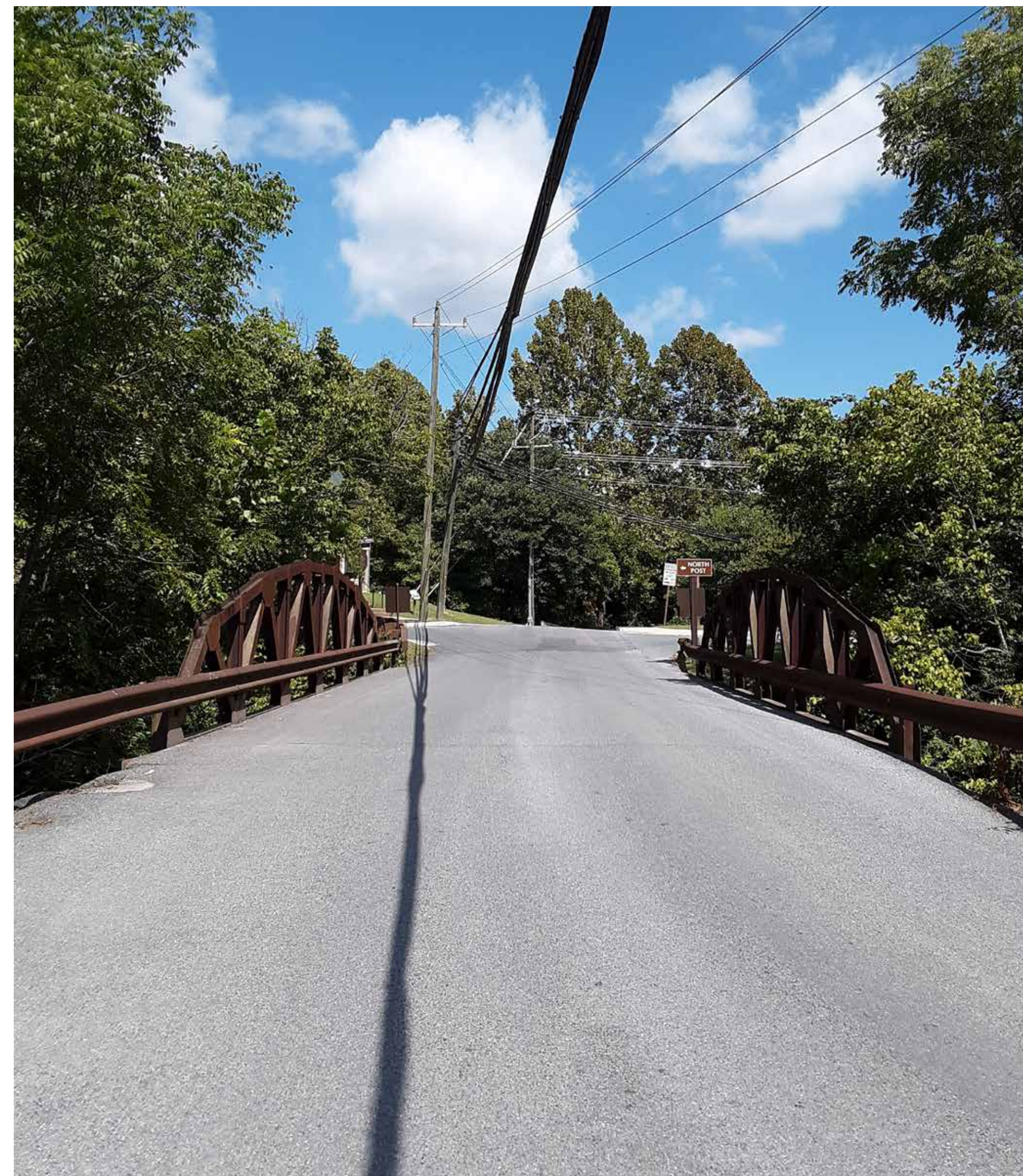




Before: Concrete block restroom



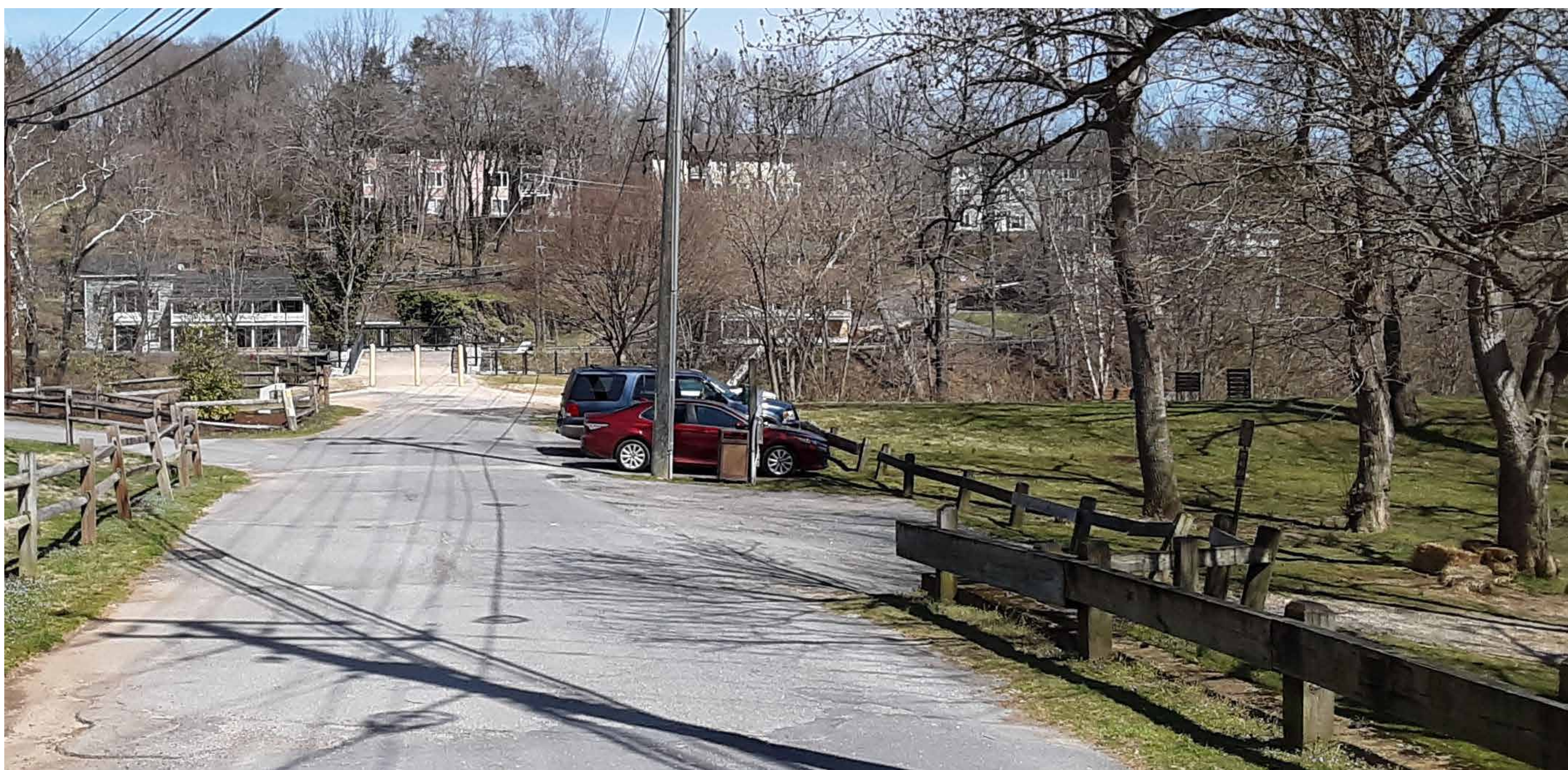
M. After: Example of a mural added to restroom facade



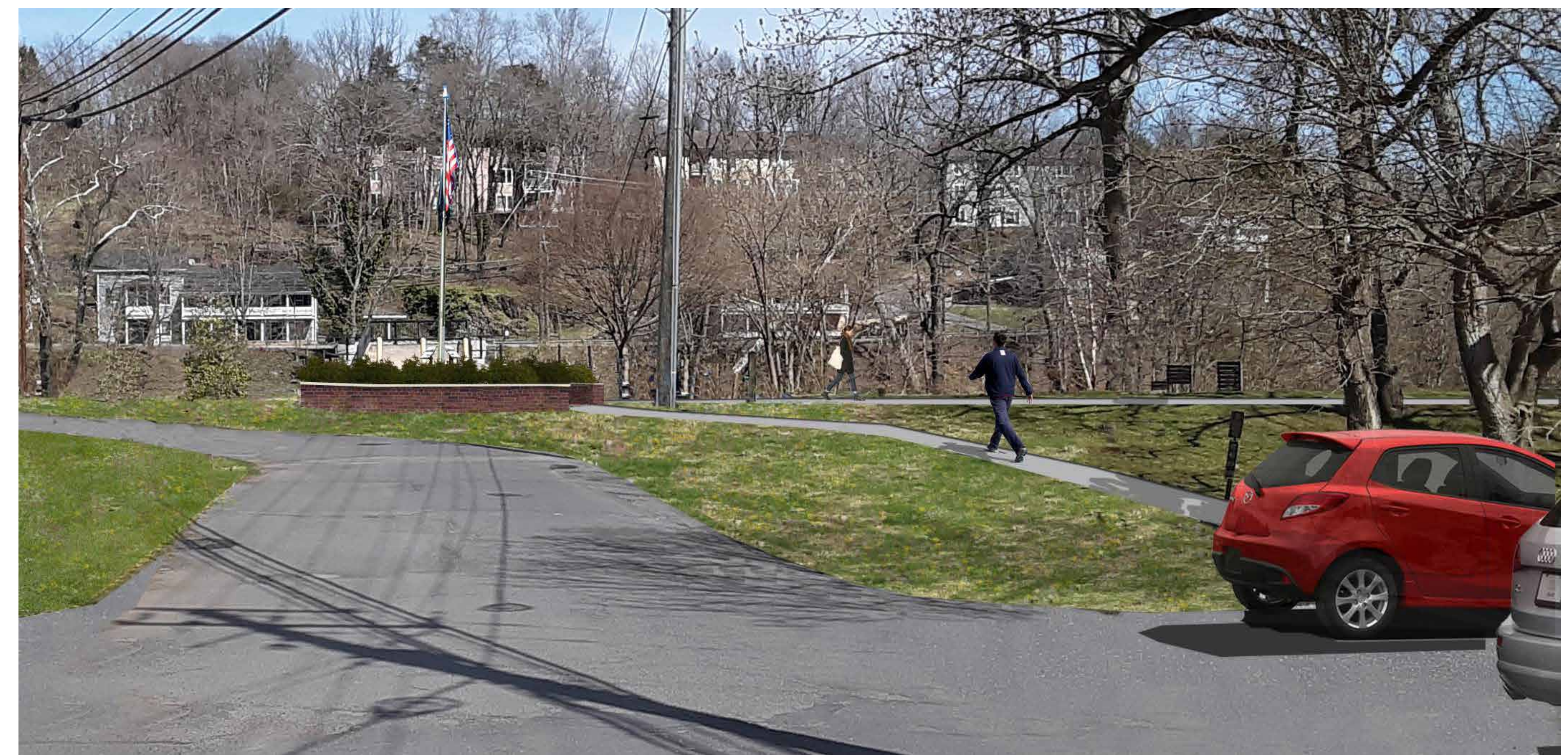
Before: 22' wide Bridge at Park Entrance



N. After: Bridge at Park Entrance with a one-way 14' driving lane and 8' bike/ped path



Before: Entrance road looking toward the overlook area



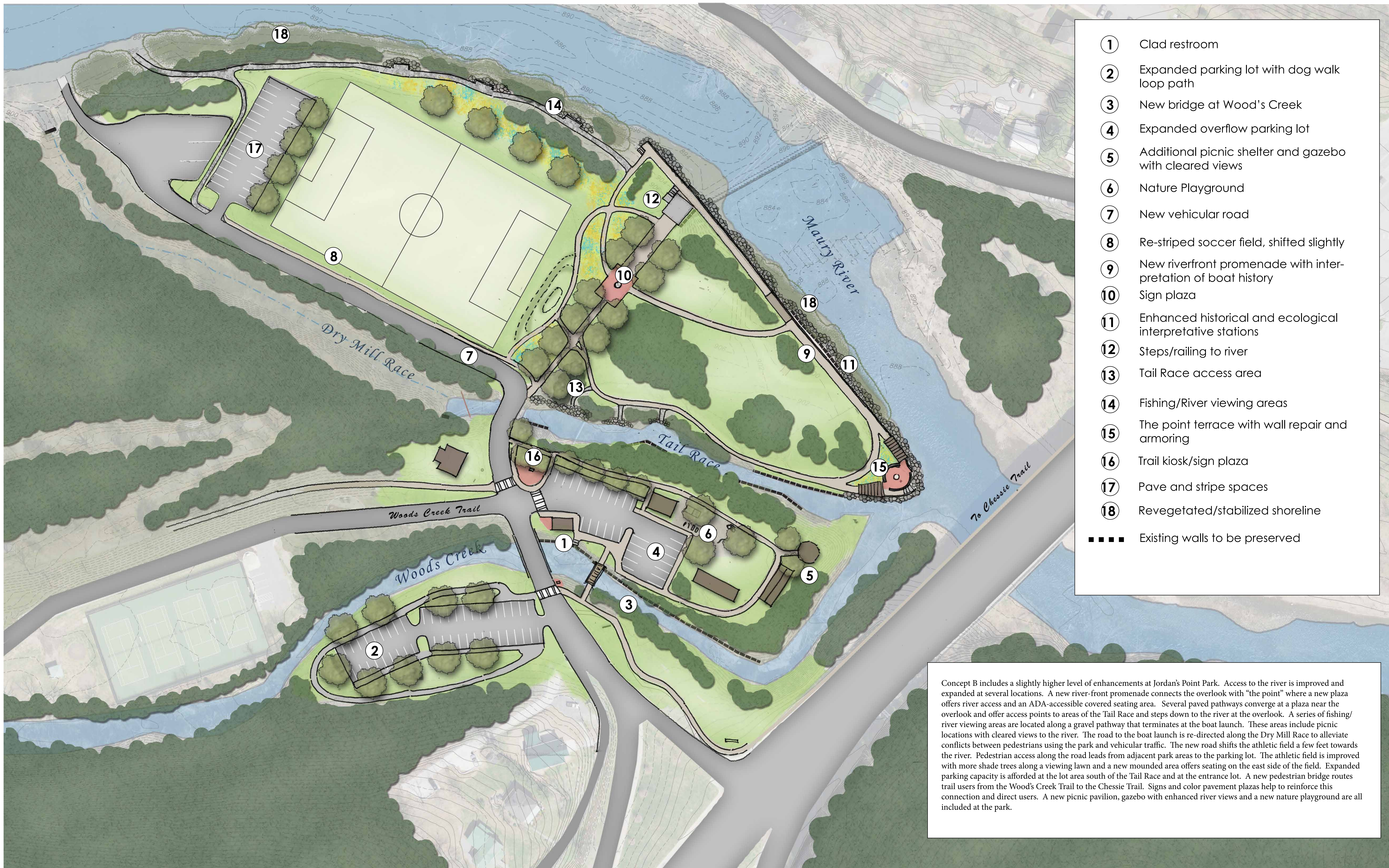
O. After: By streamlining the roadway, additional park space can be gained near the river overlook, where a new sign plaza marks its entrance. The circular plaza, with built-in seatwalls, welcomes visitors to pause at the intersection of multiple pathways and offers a space for highlighting and interpreting park history.



PLEASE COMMENT HERE ON THE PHOTOBOARDS AND PHOTOMODELS FOR CONCEPT A

1. Include the letter(s) of the photo you are commenting on
2. Write your comments on this board or attach your sticky note



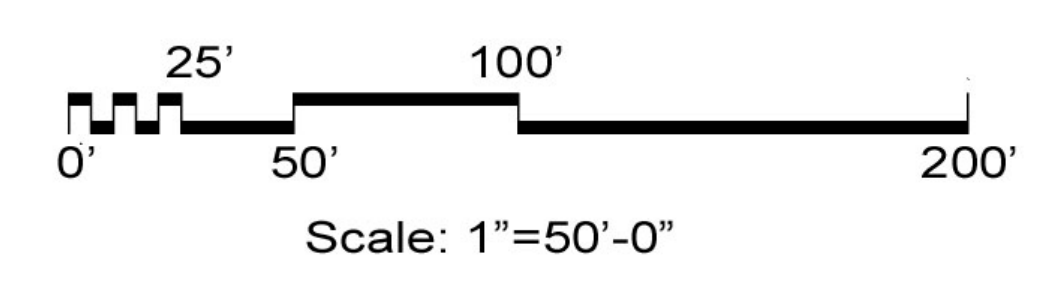


- ① Clad restroom
- ② Expanded parking lot with dog walk loop path
- ③ New bridge at Wood's Creek
- ④ Expanded overflow parking lot
- ⑤ Additional picnic shelter and gazebo with cleared views
- ⑥ Nature Playground
- ⑦ New vehicular road
- ⑧ Re-striped soccer field, shifted slightly
- ⑨ New riverfront promenade with interpretation of boat history
- ⑩ Sign plaza
- ⑪ Enhanced historical and ecological interpretative stations
- ⑫ Steps/railing to river
- ⑬ Tail Race access area
- ⑭ Fishing/River viewing areas
- ⑮ The point terrace with wall repair and armoring
- ⑯ Trail kiosk/sign plaza
- ⑰ Pave and stripe spaces
- ⑱ Revegetated/stabilized shoreline
- ■ ■ Existing walls to be preserved

Concept B includes a slightly higher level of enhancements at Jordan's Point Park. Access to the river is improved and expanded at several locations. A new river-front promenade connects the overlook with "the point" where a new plaza offers river access and an ADA-accessible covered seating area. Several paved pathways converge at a plaza near the overlook and offer access points to areas of the Tail Race and steps down to the river at the overlook. A series of fishing/river viewing areas are located along a gravel pathway that terminates at the boat launch. These areas include picnic locations with cleared views to the river. The road to the boat launch is re-directed along the Dry Mill Race to alleviate conflicts between pedestrians using the park and vehicular traffic. The new road shifts the athletic field a few feet towards the river. Pedestrian access along the road leads from adjacent park areas to the parking lot. The athletic field is improved with more shade trees along a viewing lawn and a new mounded area offers seating on the east side of the field. Expanded parking capacity is afforded at the lot area south of the Tail Race and at the entrance lot. A new pedestrian bridge routes trail users from the Wood's Creek Trail to the Chessie Trail. Signs and color pavement plazas help to reinforce this connection and direct users. A new picnic pavilion, gazebo with enhanced river views and a new nature playground are all included at the park.



Jordan's Point Park Master Plan | Concept Plan B



PLEASE PLACE **ONE RED DOT** ON EACH FACILITY OR FEATURE (**REFER TO CONCEPT PLAN B**) YOU WOULD MOST LIKE TO SEE IMPLEMENTED AT JORDAN'S POINT PARK

① Cladding on restroom
② Expanded overflow parking lot with dog walk loop path
③ New pedestrian bridge at Wood's Creek
④ Expanded overflow parking lot
⑤ Additional picnic shelter and gazebo with cleared views
⑥ Nature Playground
⑦ New vehicular road alignment
⑧ Re-stripped soccer field, shifted slightly
⑨ New riverfront promenade

⑩ Sign plaza
⑪ Enhanced historical and ecological interpretative stations
⑫ Steps/railing to river
⑬ Tail Race access area
⑭ Fishing/River viewing areas
⑮ The point terrace with wall repair and armoring
⑯ Trail kiosk/sign plaza
⑰ Pave and stripe spaces
⑱ Revegetated/stabilized shoreline





P. Plaza/river access at "the point" will highlight the importance of this location, as the park's namesake.



S. Trailhead example - with signs and map to help better direct trail users.



W. Example of designated seating areas along trails.



BB. Nature playground - using nature-based materials to encourage children's play.



Q. River promenade leading to "the point" and offering access to the shore.



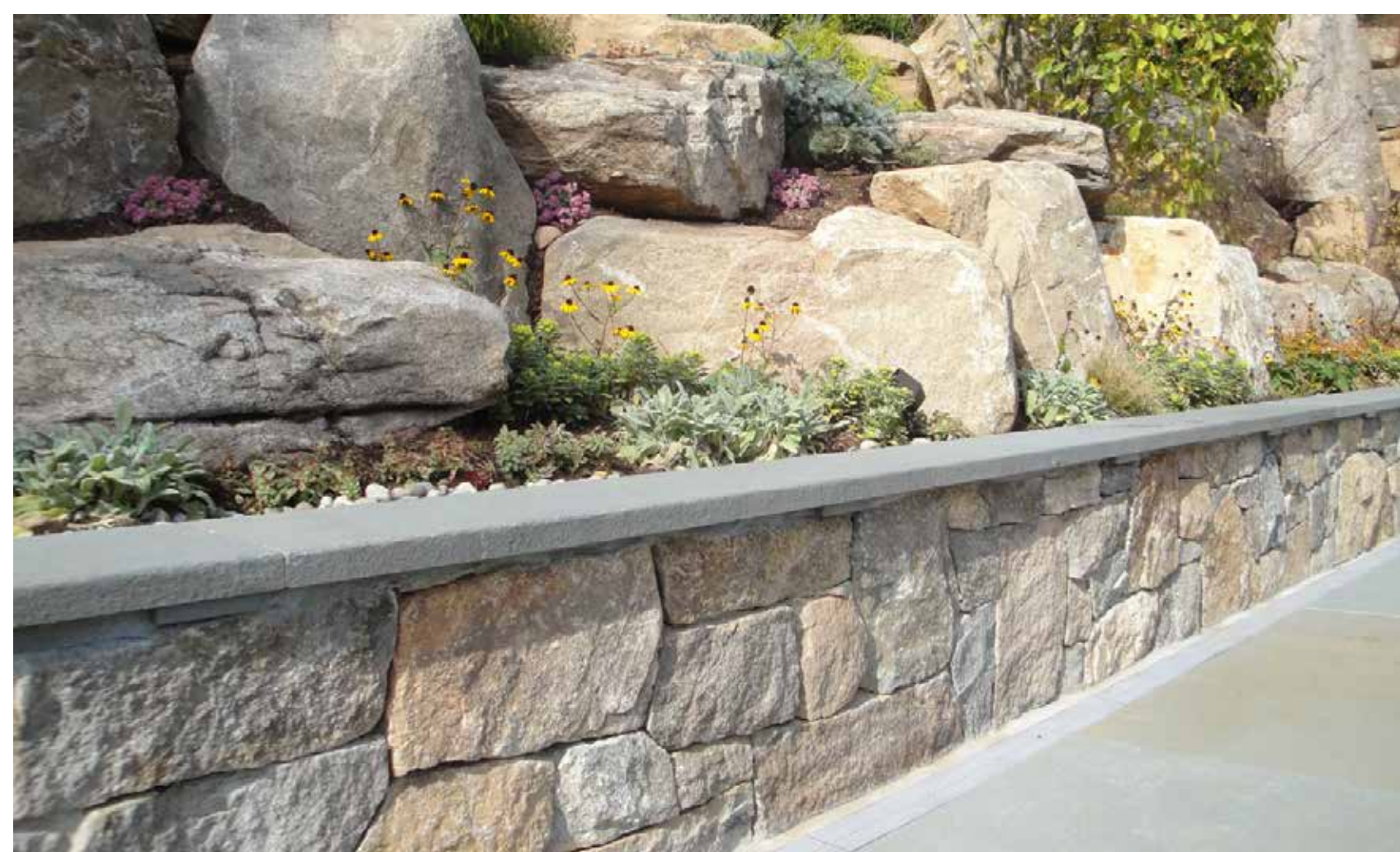
T. Gazebo with river views offers a space for gathering or quiet reflection.



X. Reinforced and revegetated shoreline for erosion control.



CC. Mounded area for viewing athletic events.



R. Seat wall at sign plaza.



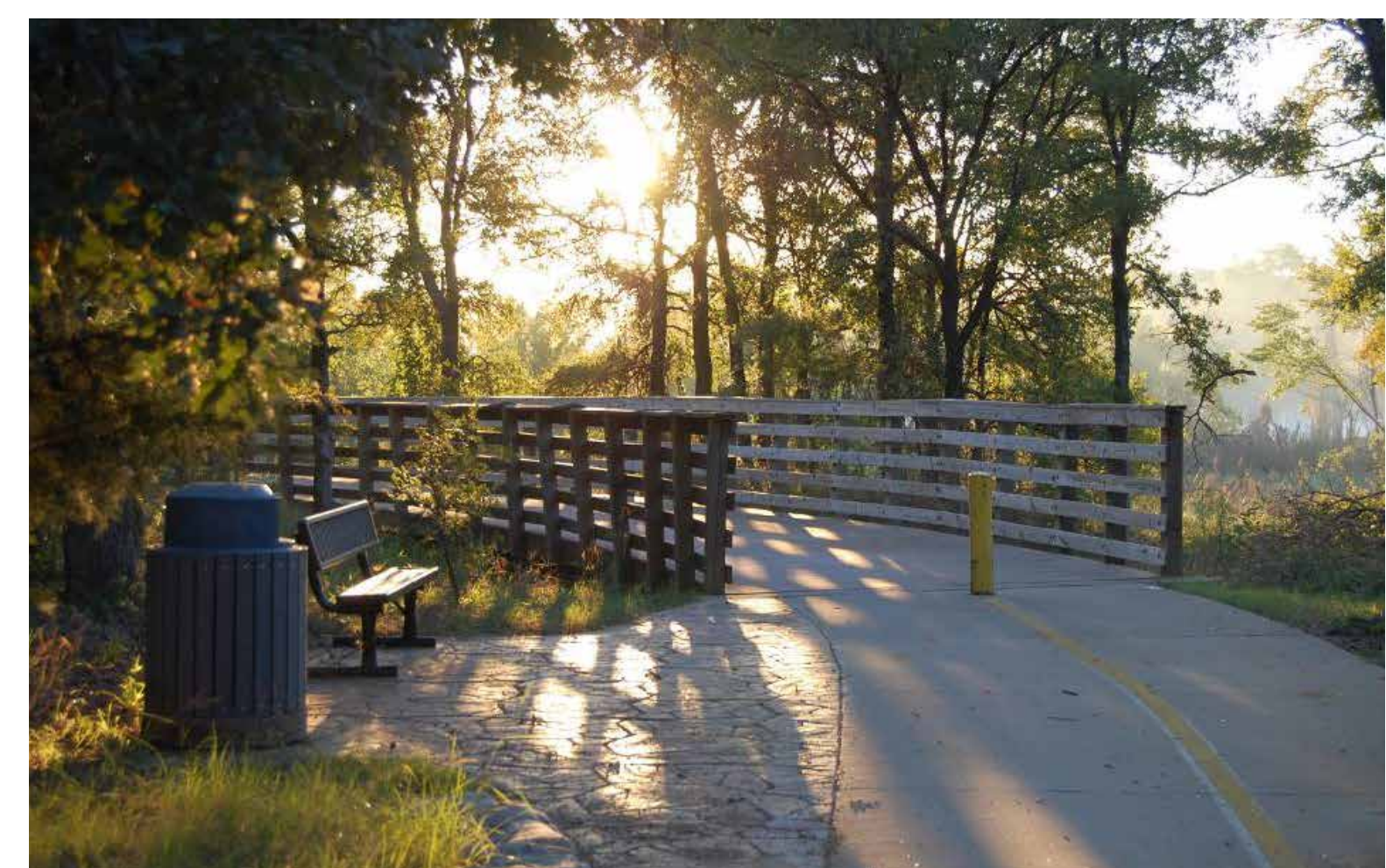
U. Canoe/kayak launch or take-out.



Y. Separated pedestrian river access.



DD. Example of improved information plaques to interpret site ecology and history.



V. Pedestrian bridge offering a safe and beautiful connection between trails.



Z. Fishing and viewing platform.



EE. New Picnic Pavilion will offer more space for events and picnicking.





Before: Concrete block restroom



EE. After: Cladding on restroom facade, compatible with the Miller House



Before: Maury River edge



FF. After: Maury River edge with new promenade to "The Point"



PLEASE COMMENT HERE ON THE PHOTOBOARDS AND PHOTOMODELS FOR CONCEPT B

1. Include the letter(s) of the photo you are commenting on
2. Write your comments on this board or attach your sticky note

